

## CRYSTAL NETWORK ANALYZER

**MODEL: SCN-6000**

\*\*\*\*\* !!!!!! PRELIMINARY !!!!!! \*\*\*\*\*

### Highlights

- Fast and accurate transmission method measurement using a PI Network
- Phase locked & frequency locked operation
- Accuracy: +/- 1 ppm typical for frequency, typically 5% for resistance
- Three types of FL measurement including equivalent reactance method
- Fast measurement, <0.5 sec. for full measurement of motional parameters
- 1-256 MHz frequency range
- A broad selection PI Networks available for various leaded and SMD packages
- 10 Point DLD Test in <0.5 seconds



### Additional Features

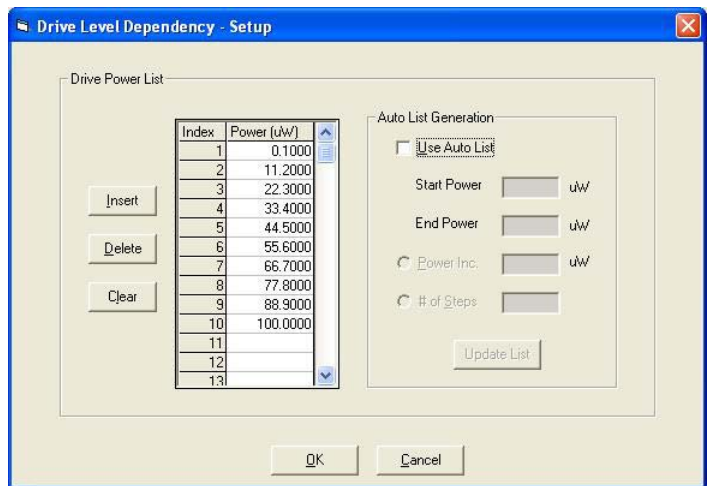
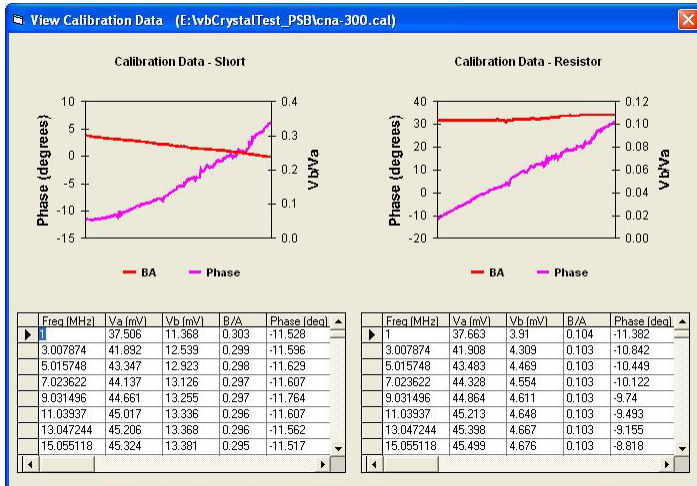
- ✓ Numerous drive level dependency (DLD) test options
- ✓ Variable drive power, 1 nW to 100 uW 1 – 160 MHz ( 25 ohm crystal )  
1 nW to 50 uW 160 – 256 MHz ( 25 ohm crystal )
- ✓ Immediate PASS/FAIL indication against performance specification
- ✓ Test spurious modes, multiple capacitive load frequencies and trim sensitivity
- ✓ Flexible result storage for easy data export (DBASE data format)
- ✓ On-line statistical lot analysis for review and reporting

\*\*\*\*\* !!!!!! PRELIMINARY !!!!!! \*\*\*\*\*

\*\*\*\*\* !!!!! PRELIMINARY !!!!! \*\*\*\*\*

## System Description

The Model SCN-6000 is a PC based crystal measurement system providing an economical means to quickly and accurately measure crystal parameters. The ability to perform both phase and frequency locked (network analyzer) operations gives the user measurement versatility not available in other commercially available test equipment. The system has an easy to use production mode as well as a more versatile laboratory test mode. Custom test files can be created, stored, and easily recalled simplifying operator use. Although the SCN-6000 is primarily intended for stand alone production test and laboratory use, it can also be incorporated into existing test and/or sort applications. User definable external I/O allows the export/import of various test (PASS/FAIL) data as well as control inputs. Numerous plotting options allow the graphical display of crystal characteristics.



## Specifications

Frequency Range..... 1-256 MHz  
 Frequency accuracy..... +/-1ppm, typical  
 Parameters measured..... FS, FL, R, CL, L1, C1, CO, Q, Trim, Drive level, Spurious modes  
 Ext. reference..... 10 MHz into 50 Ohms @ 50mV (optional)  
 Power requirements..... 100/115/215/230/245VAC, 50W, 50/60Hz  
 Dimensions (SCN-6000 only) (LxWxH) without rack mount option.....30.5cm x 43.8cm x 11.4cm  
 Weight (SCN-6000 only).....4.8Kg  
 Rack Mount .....Option available for mounting in Std 19" Rack

## Complete system includes:

- Crystal Network Analyzer (CNA-300)
- Period Counter Card
- TFP PI Network
- System computer, optional printer
- IParallel Interface Card
- ISystem cabling
- IDocumentation